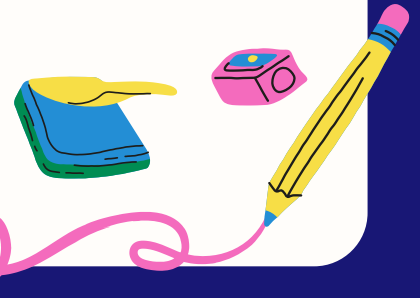


BMS TAG Newsletter

October 11, 2022

TAG Coordinator
Kate Good
kagood@pps.net



Important Dates

TAG referrals open:

October 17-December 2

Family Zoom Office Hours

with TAG Department:

October 26 6-7 pm



TAG Updates

Thank you to all of the families that attended the TAG info session on Back-to-School night.

If you'd like to review the slides presented, you can find them [here](#).

Q & A From Family Night



1. Does PPS's TAG newsletter go out to all TAG families?

Two letters per year go out to all PPS families. Four newsletters per year go out to all PPS TAG families. These newsletters are available to all.

2. Do teachers have to opt into TAG professional development?

In most cases, yes. The exception is TAG PD provided during staff meetings, which is required for all teachers.

3. What advanced options for math will exist once compacted math is no longer available?

News on updated math curriculum is expected from the math department this winter.

4. When might PPS roll out TAG identification in other areas (e.g. art)?

We are required to have more identification options by next year. The TAG department is awaiting guidance from the Oregon Department of Education.

